

## *Location and Access*

Blackbutt Reserve is situated about 20kms south of Wollongong, and an easy 1½ hours drive south of Sydney. The main entrance is located on Shellharbour Road.

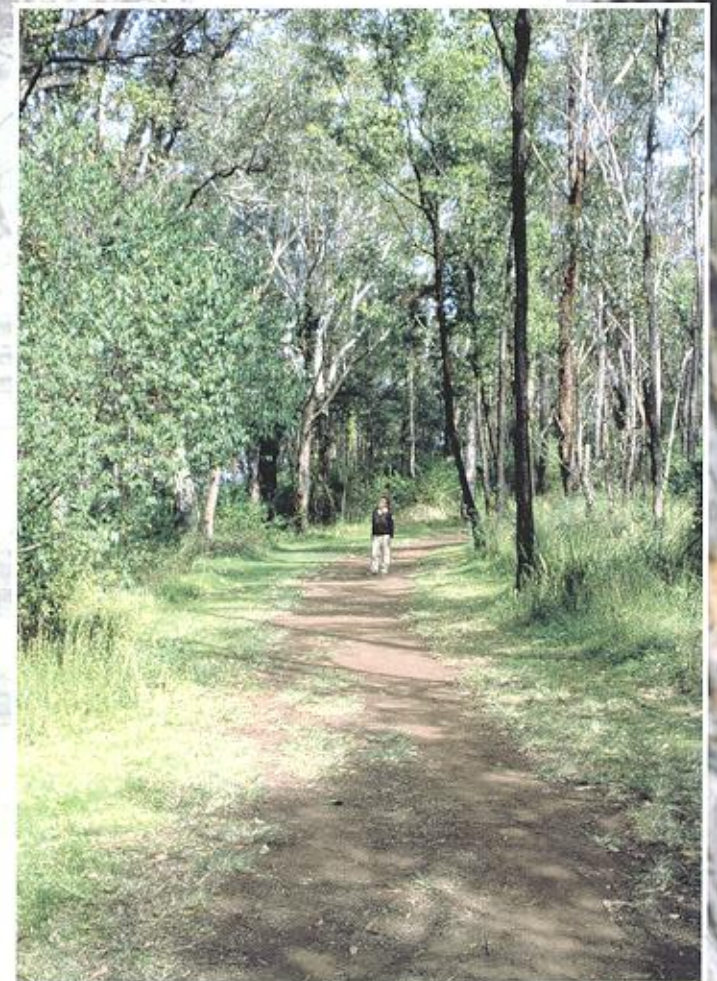
The Reserve is open 7 days from 8 am to 5.30 pm throughout winter and 8 am to 7 pm during daylight saving time. Closed during total fire ban.

For further information contact

**Tourism Shellharbour**  
on 02 4221 6169

# BLACKBUTT FOREST RESERVE

## *Shellharbour*

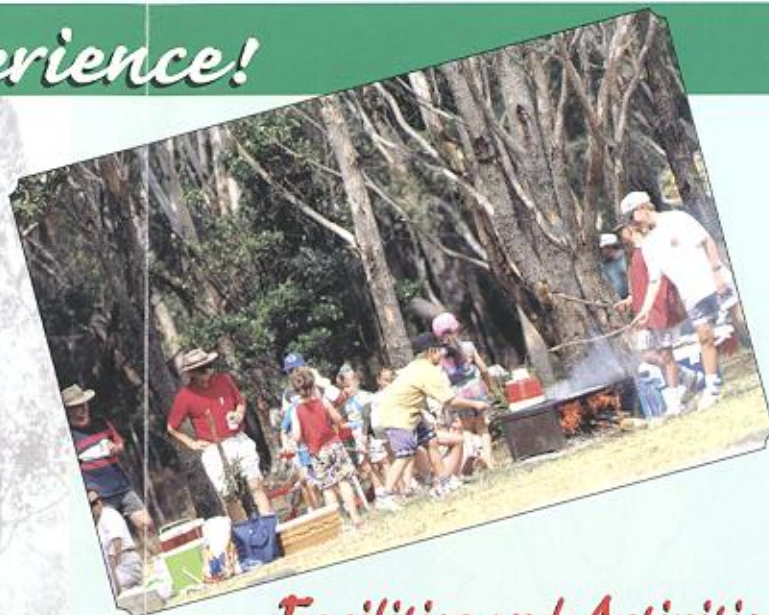


# Enjoy the Experience!

## BLACKBUTT RESERVE

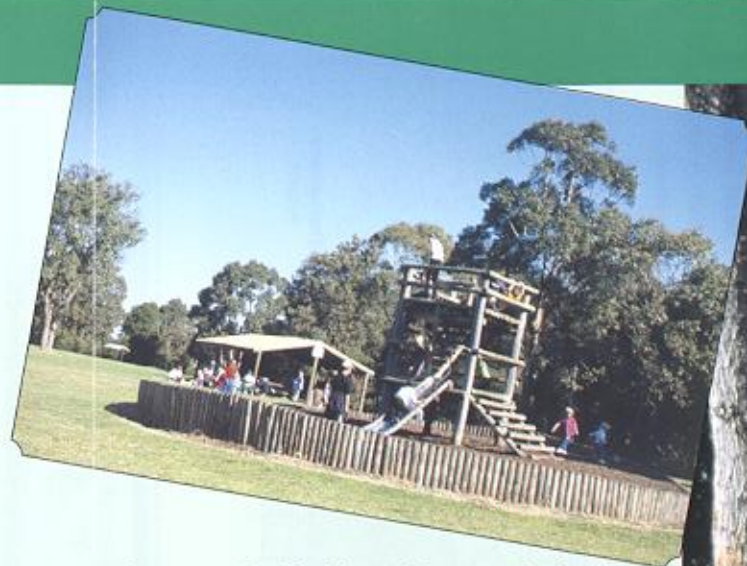
located in Shellharbour City, is a 250 acre (100ha) pocket of natural bushland, the largest reserve in the Illawarra.

It's unique to the Illawarra region and is home to a wide range of vegetation types and wildlife.



## Facilities and Activities

- Electric and wood burning BBQ facilities and picnic tables are located at strategic points throughout the reserve
- Three amenity blocks
- Fully equipped children's playground
- Walking tracks and trails
- Cross country course
- Cycleway
- Amphitheatre
- Bird watching
- Education/group guided tours available on request
- On the leash designed dog areas



## Features in Blackbutt Reserve include:

- A wide variety of vegetation types, offering large stands of Blackbutt (*Eucalyptus plulantis*).
- Recreational areas used for picnicking, bushwalking, jogging, cycling and bird watching.
- Views of the lake, escarpment, Macquarie Pass and Saddleback Mountain.
- An amphitheatre which contains seating for 400 people and can accommodate up to 2000 people on the adjoining grassed areas.
- The last viable remnant of coastal plain forest within the Illawarra.
- A unique rainforest gully supporting a variety of different wildlife species.
- Blackbutt Dam, which supports a wide variety of waterbirds, some of which nest there every year.